

from the president/CEO



Greetings once again. I am pleased to announce that we will be kicking off the demolition of Central Park Village during a ceremony scheduled for **Tuesday July 31, 2007 at 10:00am**. The site of the demolition ceremony will be Armwood Court on the north side of Scott Street. I wish to invite all former residents of Central Park to return and take part in this historic event as we make way for a bigger and brighter future for the Central Park community.

In this issue of the newsletter we have once again made reference to the vast array of supportive services available to all former residents. And I again encourage you to make the absolute best of this once in a lifetime opportunity to learn, advance, excel, and prepare for a more self-sufficient lifestyle and greater opportunities for economic and personal growth for yourself and your children. Now is the time to take advantage of job trainings, educational assistance, counseling, social and life skills, daycare and transportation assistance, and lots of other services and activities to allow you to socially and economically re-build your life as we are physically rebuilding your former neighborhood. Remember these services are available for a total of five years so don't wait, get involved and stay involved.

Sincerely,

Jerome D. Ryans

President/CEO

CLASSES & SERVICES

GED Classes
M - Th 8 am - 11:30 am
and 12:30 pm - 2:30 pm
1800 N. Rome

Job and Career Services
offered daily 8 am-5 pm
1000 India Street
contact your Case Manager

Budget and Credit Classes
(Through Genesis Financial)
Weds 12 pm - 2 pm
Transportation provided

UPCOMING EVENTS

FSS Orientation

July 17th

Career Connection Fair

July 31st

Central Park Demolition Kick-off

July 31st

JOBS

Coming Soon - Opportunities
for Certified Painters

www.thajobs.com

Housing Authority of the City of Tampa
Office of Real Estate Development
1529 W. Main Street
Tampa, Florida 33607

ADDRESS CORRECTION REQUESTED

let us know if you
would like to receive the
CPV newsletter by email...
contact: **Amanda Brown** at
813-253-0551 ext. 239 or
amandab@thafi.com

Housing Authority
contact information
(813) 253-0551

Section 8 Department
ext. 200

Relocation Coordinator
223-6137

Office of Real Estate
Development
ext. 128

CPV Newsletter
Amanda Brown
ext. 239

www.thajobs.com

CPV review produced by:
THA Office of Real Estate Development



Jerome D. Ryans
President/CEO

Dr. Hazel Harvey
Chairperson

Robert Shimberg
Vice Chairperson

Karen Peoples

Ruben E. Padgett

Sophia Sorolis

Gerald White

M.G. "Manny" Alvarez, Jr.

CPV
review



central
park
village

for the residents and surrounding community of central park

JOIN US at the CENTRAL PARK VILLAGE DEMOLITION KICK-OFF - JULY 31st, 2007 @ 10 a.m.

volume 7, issue 4

NEW HORIZONS

As the relocation from Central Park Village comes to an end, we encourage all former residents to take advantage of every opportunity available to you through the Programs and Property Services Department and the CSS program. The many services and programs available that can help you achieve your short-term and long-term goals are:

- tutoring
- youth activities
- Life Skills
- cultural awareness
- schools & grade transition support
- child literacy classes
- after-school program
- computer training
- homeownership counseling/ training
- resident capacity building
- employability skills
- social & life skills
- consumerism
- family issues
- education & skill building
- high school diploma/ GED
- stable housing
- re-occupancy
- motivation/ self-empowerment
- money management
- debt free or debt management
- citizens awareness & responsibility
- voting rights & securing a Driver's License
- achieving self-sufficiency
- job coaching
- resume writing
- interviewing techniques
- how to apply for employment
- employment search
- job & career counseling
- job training
- "dress for success"
- career planning & development
- workplace essentials
- transportation assistance
- day care/ child care assistance
- professionalism & work ethics
- employee benefits & promotions
- adult education/ tuition assistance
- adult literacy classes
- ESOL classes
- ABE/ GED prep classes
- Senior medical & health awareness
- Senior transition to Medicare
- substance abuse counseling
- mental health counseling
- family wellness programs
- basics in money management
- setting up savings & checking accounts
- managing savings & checking accounts
- consequences of writing NSF checks
- understanding credit resolution
- closing bank accounts
- "Identity Theft"
- Hospitality Services training
- basic office skills training
- non-traditional jobs (Skilled Labor Industry)
- disability training services
- medical/ health training
- financial planning
- "wealth building"
- Individual Savings Accounts (IDA's)
- steps to starting a small business
- how to write an effective Business Plan
- where to find the money (to start a business)
- spousal/ family counseling



Case Management Coordinator, Rosa Hill, discusses the services available through the CSS program at a recent Central Park meeting.

J
U
N
E

2
0
0
7

You're Invited!!!
**CENTRAL PARK
DEMOLITION KICK-
OFF**

July 31st, 2007
10:00 a.m. @ CPV
Armwood Court



CONTENTS

Central Park CRA.....	2
Relocation Meetings	2
Resident Highlights	3
Former CPV residents.....	3
Kids's Corner.....	3
From the President/CEO...	4
Calendar/Jobs.....	4

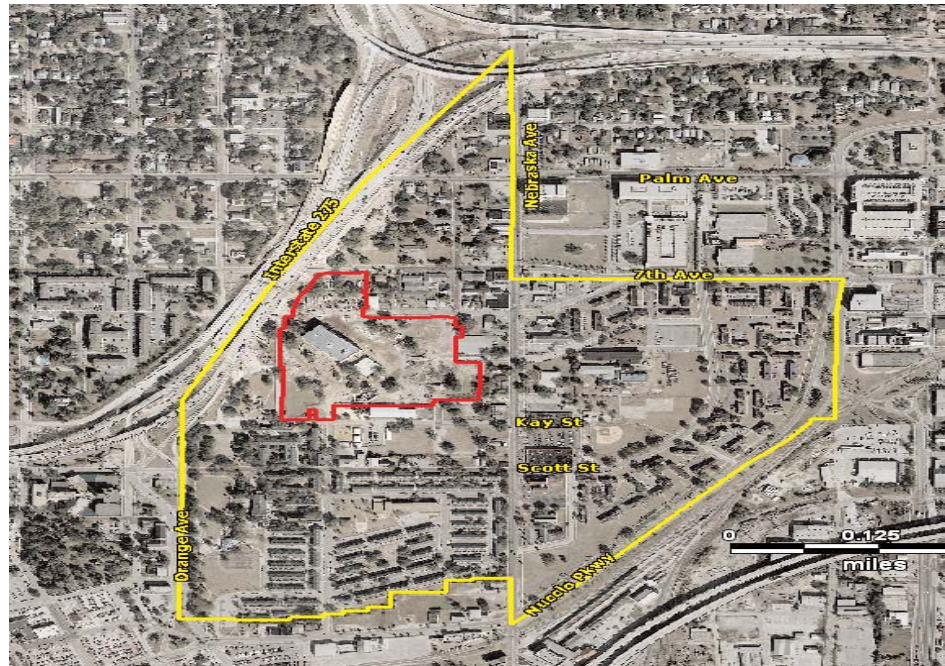


Central Park CRA (Community Redevelopment Area)

Along with the redevelopment of Central Park Village, the community surrounding and including the housing development was designated as a Community Redevelopment Area (CRA) by the City of Tampa in 2006. June 7th, 2007 was the first Strategic Action Plan Meeting, called the *Community Kick-off and Visioning Session*, held by the City and its partners. Several Central Park residents and and THA staff members participated in the meeting. Those who attended the meeting were able to add their input on a future vision for the area. The Strategic Action Plan will specify improvement efforts and objectives for the overall Central Park Community. While Central Park Village is a part of the CRA, the Community Redevelopment Area encompasses a larger part of the surrounding community. The CRA encompasses a 143 acre area, including Central Park Village, Tampa Park Apartments and the area North of Central Park Village up to I-4, but excludes the GTE Federal Credit Union site. The Strategic Action Plan will have very little effect on the design and layout of the Central Park Village redevelopment. Upcoming community meetings will be scheduled for August and October of this year. We encourage all Central Park residents to participate in future meetings and community activities, especially if you wish to return to Central Park after it is redeveloped. Even if you have or are planning on moving to another community we encourage you to become involved in your community and neighborhood associations, not only to meet and get to know your neighbors but also to allow your opinions to be heard.



(Top) The audience was broken down into two groups where participants discussed and formulated ideas for further improvements and economic opportunities. (Middle) **Michael Hatchett**, Urban Development Manager of the Central Park CRA discusses the strategic action plan. (Bottom) CPV residents **Ruth Dewberry** and **Alicia Dorsey** participated at the meeting. (Left) Central Park Redevelopment Area, GTE Federal Credit Union site is not part of the CRA.



ARE YOU PREPARED FOR HURRICANE SEASON?

It's never too late to prepare your new home and your family for hurricane season. Study evacuation routes, prepare supplies, and check with your landlord or property management to see what preparations they take.



Section 8 landlord **Frank Carter** speaks gives tips to Central Park residents.

RESIDENT RELOCATION MEETINGS

Every Tuesday @ 6:00 P.M.

We will continue to hold weekly resident meetings until everyone has moved offsite. On June 26, 2007 a short landlord-tenant workshop was held during the relocation meeting. Section 8 landlord, **Frank Carter** spoke to Central Park Residents about how to build an effective relationship with their current and future landlords. After relocation is completed we will begin to hold annual spring fairs to provide important information.

Resident Highlights



Carmen Miranda (left, with grandson **Robert Louis Booker IV**) was recently promoted to acting Store Manager at the Motherhood Maternity clothing store. Carmen has worked there for about 5 years and enjoys the new opportunity she has been given. Carmen and her family moved into public housing in 1988. She moved to Central Park about 8 years ago due to the Seminole Park Modernization Relocation. Ms. Miranda is glad that THA is demolishing Central Park as she felt it has fallen into disrepair and was pest ridden. She and her family moved into an apartment through Section 8 a month ago. She likes her new apartment and the opportunities that Section 8 gives her. CONGRATULATIONS Carmen!

ON THE MOVE

"farewell for now to these CPV residents... but we hope to see them back someday...."



Equila Melton



Ethel Golfin



Cora Malone



Agnes Renard



Rosalind McDuffie

- Dimitrius Adams
- Wilitha Ashley
- Angie Baker
- Natasha Black
- Linda Boyd
- Monica Carney
- Carolyn Coston
- Eva Cotton
- Lasonja Council
- Tracye Currie
- Deborah Davenport
- Shelia Gadson
- Lasonja Gibson
- Mary Guyton
- Sharon Hardy
- Mary Harris

- Zenobia Harper
- Recia Hester
- Nathaniel Hill
- Davonne Johnson
- Javon Kitchen
- Monica Matthews
- Earthene McCant
- Lashawnta Melton
- Sabrina Mickens
- Alfreda Moore
- Lasheka Moore
- Juan Ayende Nieves
- Jose Pacheco
- Lyonda Richardson
- Cynthia Robles
- Liliane Saintelmy

- Ebony Scrivens
- Griselle Segarra
- Florida Simpson
- Roberta Smith
- Felicia Smotherman
- Sharhonda Warren
- Claricia Watts
- Margie White
- Mary L. Williams
- Nancy Williams
- Tiquanda Williams
- Alika Wright
- Mary Wright

Kid's Corner

Ashley Williams, granddaughter of Resident Council President, **Mary Williams**, recently made the High Honor Roll and scored a 3.5 on her FCAT at Blake High School. She will be entering 10th grade in the Fall.

Rashea Brown was accepted to **Florida A & M University** for the fall term and recently was hired at Starbucks in the Tampa International Airport!



SCHOOL STARTS AUGUST 20th

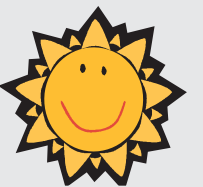
We remind families to update their address with either the school board or to contact their child's new school directly. If you would like to know which schools your child will be

attending once you move please call your case manager or visit the Hillsborough County School Board website: <http://www.sdhc.k12.fl.us/>

THA/PPS SUMMER ENRICHMENT PROGRAM

please contact **Maleke Fowler** for more information @ (813)253-0551 Ext. 118/381

St. Peter Claver Catholic School at 1401 N. Governor St. is accepting applications. Scholarships are also available. See your case manager for more details and an application



UPCOMING EVENTS

FSS Orientation
July 17th - 10:00 a.m. @ 1800 N. Rome Ave.

Career Connection Fair
July 31st - 9 a.m. -12 p.m. @ West Tampa Neighborhood Service Center
2103 N. Rome Ave.

Central Park Village Demolition Kick-off
July 31st - 10 a.m. @ CPV Armwood Court

FREE CHILD CARE

is available for 3 and 4 year olds from Hillsborough County's Goals Program for Head Start. Information flyers are available at the Central Park Office.

Hills. County Goals Program
3639 W. Waters Ave., Suite 500
Tampa, FL 33614
(813) 272-5140 ext. 3700